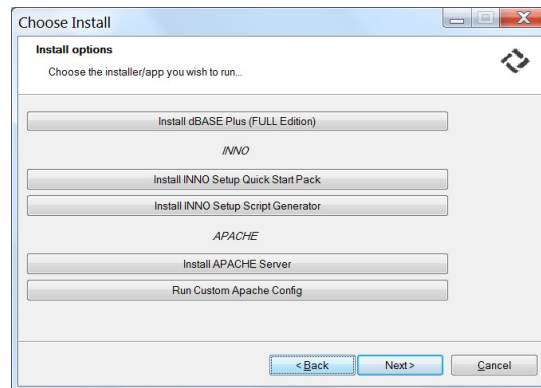




Installation and Set Up Guide

Step 1 To install dBASE PLUS, insert the dBASE CD into your CD drive. After you choose your Language for the installer and click Next on the Welcome screen, you will see the install options to the right.

Step 2 Choose to install one of the following install Options:
1 – dBASE Plus
2 – INNO Setup Quick Start Pack
3 – INNO Setup Script Generator
4 – Apache Server
5 – Run Apache Config.



Option 1 Install dBASE PLUS – Installs dBASE PLUS on your computer.
Either click on the 'Install dBASE Plus (xxx Edition)' button or click Next to continue.

IMPORTANT NOTE: The Borland Database Engine will also be installed during the dBASE PLUS installation. *If you have other applications running that use the Borland Database Engine, you must close them before continuing.*

Instructions for each page of the installer:

License Agreement : Accept the License agreement and click Next

Customer Information: Enter your User Name, Company Name and Serial #

Destination Folder: Accept the default or choose another folder to install dBASE Plus.

Destination Folder: Accept the default or choose another folder to install the BDE.

Choose Languages: Choose the languages you would like supported by the dBASE Plus IDE.

SetupType: Choose which options to install...

Typical with SQL Links – will install everything!

Typical – will install everything but, the SQL Links

Minimal – will install Just the dBASE Plus IDE and BDE.

Runtime and BDE – will install the Runtime and BDE files.

Ready to Install: Click Next to continue.

After all of the files have been installed the BDE Config file (IDAPI.CFG) will be merged or created and the MSVC Runtime will be installed. The MSVC runtime is necessary for the registration of some of the support files.

IMPORTANT NOTE: When the install has completed you will be asked to **re-boot**. **THIS IS IMPORTANT** as there are some Windows cleanup that is necessary before running dBASE.

Most files are installed under the **<dBASE Plus root>** directory. However, if you are installing under windows Vista or Windows 7 the default installation for some of these files changes. Also, some files (like Samples) are copied to the **<c:\users\username>** directory in order to allow for editing of these files. This is because of the strict control Vista & 7 implement under most public

folders (This is called UAC).

For more information on where files are installed goto *Help | Contents and Index* (in the Plus IDE) and search for 'useUACPaths' under the Index tab.

More information on UAC in general is also available in the Help files.

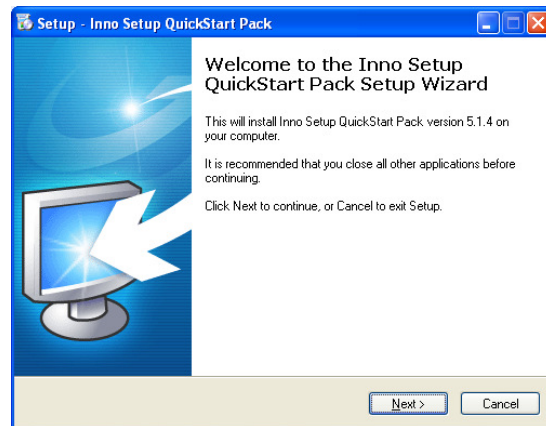
dQueryWebServerComponents (when choosing either Typical Setup type) will be installed automatically under the c:\ directory.

- **Install Project Explorer Support Tools** –Project Explorer has the ability to generate a script that can be used to create an installation program with Inno Setup. Inno Script Generator is a program required to use Inno Setup with the new Project Explorer features. Choose this option to add support for these features, which include the Inno Setup QuickStart Pack and Inno Script Generator. See *Step 6* for installation instructions.
- **Install Apache Web Server** – Installs Apache web server software. Apache can be used to setup a web site for running dQuery/Web applications.
- **Set Up Apache** – Configures Apache for use by dQuery/Web after you have run the Install Apache Web Server option.

Option 2 Install INNO Setup Quick Start Pack –Project Explorer has the ability to generate a script that can be used to create an installation program with Inno Setup.

To install the Inno Setup QuickStart Pack:

- Follow the on-screen prompts.
- Choose installation location – defaults to “C:\Program Files\Inno Setup 5”
- Choose Start Menu folder – defaults to “Inno Setup 5”
- Uncheck the box to download and install IS Tool.
- Make sure the box is checked to install Inno Setup Preprocessor.
- Uncheck the box to download and install encryption support.



Option 3 Install INNO Script Generator - Inno Script Generator is a program required to use Inno Setup with the new Project Explorer features. Choose this option to add support for these features.

Follow the on-screen prompts to install.

Option 4 Install Apache Server - Installs Apache web server software. Apache can be used to setup a web site for running dQuery/Web applications.

Follow the on-screen prompts to install.

Option 5 Run Custom Apache Config - Configures Apache for use by dQuery/Web after you have run the Install Apache Web Server option.

Follow the on-screen prompts to install.