

dBASE^{PLUS™}9

Installation and Set Up Guide

To install dBASE PLUS, insert the dBASE CD into your CD drive. Or run the Setup.exe from the self-extracting .zip file you downloaded.

IMPORTANT NOTE: The Borland Database Engine will also be installed during the dBASE PLUS installation. *If you have other applications running that use the Borland Database Engine, you must close them before continuing.*

dBASE Plus 9 will NOT install over previous versions of dBASE Plus. A new folder will be created during install ... dbase\Plus8. The Shortcuts will be created under START | ALL PROGRAMS | dBASE Plus 9.

Instructions for each page of the installer: (after the Welcome screen)

License Agreement : Accept the License agreement and click Next

Destination Folder: Accept the default or choose another folder to install dBASE Plus.

Destination Folder: Accept the default or choose another folder to install the BDE.

Choose Languages: Choose the languages you would like supported by the dBASE Plus IDE.

SetupType: Choose which options to install...

Typical with SQL Links – will install everything!

Typical – will install everything but, the SQL Links

Minimal – will install Just the dBASE Plus IDE and BDE.

Runtime and BDE – will install the Runtime and BDE files.

Ready to Install: Click Next to continue.

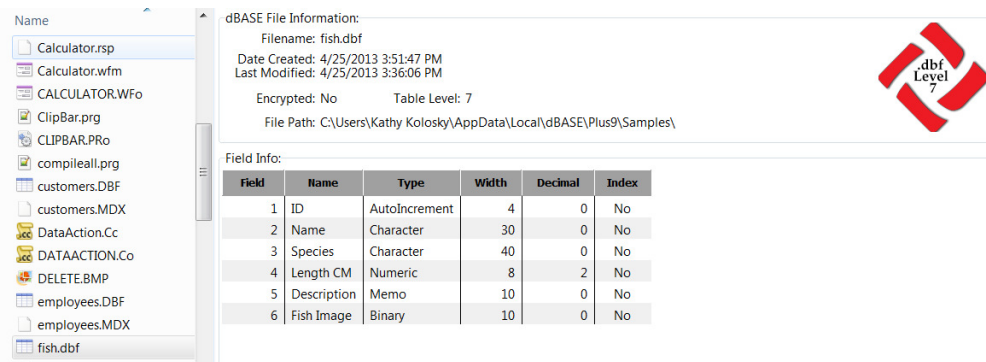
After all of the dBASE files have been installed :

1. the BDE Config file (IDAPI.CFG) will be created (if it doesn't already exist).

Then the dbfExplorer utility installer will run. This utility is used to see .dbf file structure information in windows explorer using the Preview Pane.

NOTE: dbfExplorer will **NOT** be installed with 9.4.0.0. Some registry settings performed during install need to be updated.

- 2.



The screenshot shows a Windows Explorer window with the 'fish.dbf' file selected in the 'Samples' folder. The right pane displays the 'dbf File Information' and 'Field Info' for the selected file.

dbf File Information:

- Filename: fish.dbf
- Date Created: 4/25/2013 3:51:47 PM
- Last Modified: 4/25/2013 3:36:06 PM
- Encrypted: No
- Table Level: 7
- File Path: C:\Users\Kathy Kolosky\AppData\Local\dBASE\Plus9\Samples\

Field Info:

Field	Name	Type	Width	Decimal	Index
1	ID	AutoIncrement	4	0	No
2	Name	Character	30	0	No
3	Species	Character	40	0	No
4	Length CM	Numeric	8	2	No
5	Description	Memo	10	0	No
6	Fish Image	Binary	10	0	No

3. Then the third party application “INNO Setup Quick Start Pack” installer will run.
(see next page for details)
4. The final page of the installer will ask if you want to run dBASE Plus 9 and register it. You can uncheck if you don’t want to do this. If you leave this ‘checked’ and you have not registered yet, the registration dialog will show and you will need to enter your registration information that you received after your purchase.

IMPORTANT NOTE: When the install has completed you might be asked to **re-boot**. THIS IS IMPORTANT as there are some Windows cleanup that is necessary before running dBASE.

Most files are installed under the **<dBASE Plus root>** directory.

However, if you are installing under windows Vista, Windows 7 or Windows 8 the default installation for some of these files changes.

Some files (like Samples) are copied to the **<c:\users\username\dBase\Plus8...>** directory in order to allow for editing of these files. This is because of the strict control Vista, 7 and 8 implement under most public folders (This is called UAC).

For more information on where files are installed goto *Help | Contents and Index* (in the Plus IDE) and search for ‘*useUACPaths*’ or ‘*UAC*’ under the Index tab.

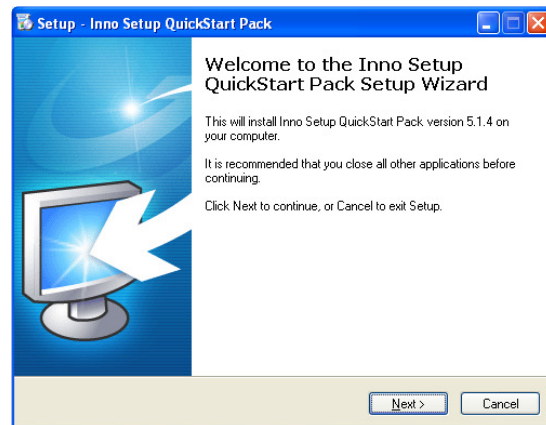
Install INNO Setup Quick Start Pack Install instructions

–Project Explorer has the ability to generate a script that can be used to create an installation program with Inno Setup.

NOTE: choose ‘Cancel’ to skip this installation if you already have the most recent version of Inno Setup QuickStart Pack installed.

To install the Inno Setup QuickStart Pack:

- Follow the on-screen prompts.
- Choose installation location – defaults to “C:\Program Files\Inno Setup 5”
- Choose Start Menu folder – defaults to “Inno Setup 5”
- Uncheck the box to download and install IS Tool.
- Make sure the box is checked to install Inno Setup Preprocessor.
- Uncheck the box to download and install encryption support.



Silent Install options...

The command line options for the full dBASE Plus installer are as follows:

/S

- Silent Mode

/X "<dBASEpath>"

- Installation path of the the dBASE Plus files.

/V COMMONBDEDIR "<BDEPath>"

- Installation path of BDE Admin

/V <languageOption> 0 or 1

- 0 is OFF and 1 is ON.

The default for a all language support files in dBASE is 1. So, unless you want to turn off an option for a language ... leave this command out. The language files are very small so, it should not be necessary to use this option. However, you can, if you wish, turn on or off any of these languages by using this option.

The languages that are available currently are:

ENGLISH, GERMAN, ITALIAN, SPANISH

if you wanted to leave out the language files for Italian for example you would do ...

/V ITALIAN 0

/E

- Enable event logging and create a c:\sbevents.txt log file

/E1

- Enable event logging and create an unique event logging file in form of sbevents_GUID.txt

/E2 ["<folder>\<filename>"]

- Enable event logging and use filename to create a c:\filename log file

/E3 ["<folder>\<filename>"]

- Lets you set the folder (optional) and name of the event logging file (/E3 "[folder\]filename"). This creates an unique event logging file. If the filename is not unique, then a number in round braces will be added to the filename before the extension, and will continue adding numbers until the filename is unique.

If using /S and NOT /X or /V COMMONBDEDIR the system defaults for these paths are used.

"<dBASE Installer Path>\<dBASE Plus Installer.exe>" /S /X "C:\Program Files\dBASE\Plus9" /V
COMMONBDEDIR "C:\Program Files\Common Files\Borland\BDE" /E3 "C:\<dBASE Plus
Installer.exe>\InstallerLog\Install_bxxxx.log"

- This will install in Silent mode to the directories stated and create a unique log called Install_bxxxx.log or
Install_bxxxx.log (x)