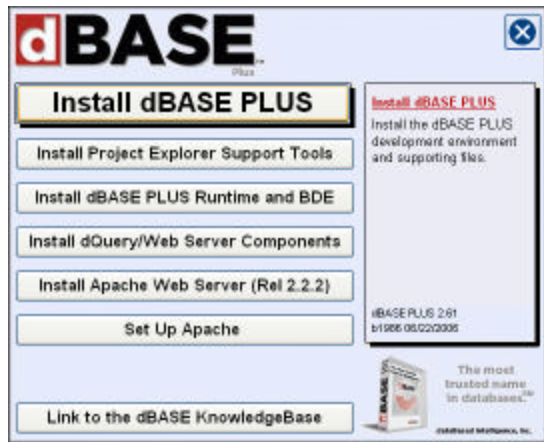




Installation and Set Up Guide

Step 1 To install dBASE PLUS, insert the dBASE CD into your CD drive. For most Windows installations, the dBASE Setup Program (shown below) will start automatically.

Step 2 If the dBASE Setup Program does not start automatically within 30 seconds, use the Windows Explorer to navigate to the CD drive where the dBASE CD is inserted or locate the folder to which you downloaded the software. Double-click on the SETUP.EXE file to start the Setup Program.



Step 3 Choose one of the following options:

- **Install dBASE PLUS** – Installs dBASE PLUS on your computer. Refer to *Step 4* and *Step 5* for further instructions.
- **Install Project Explorer Support Tools** – Project Explorer has the ability to generate a script that can be used to create an installation program with Inno Setup. ScriptMaker is a program required to use Inno Setup with the new Project Explorer features. Choose this option to add support for these features, which include the Inno Setup QuickStart Pack and ScriptMaker. See *Step 6* for installation instructions.
- **Install dBASE PLUS Runtime and BDE** – Use the runtime engine and BDE when distributing an application created with dBASE to other computers.
- **Install dQuery/Web Server Components** – Sets up a web server to support running dQuery/Web programs.
- **Install Apache Web Server** – Installs Apache web server software. Apache can be used to setup a web site for running dQuery/Web applications.
- **Set Up Apache** – Configures Apache for use by dQuery/Web after you have run the Install Apache Web Server option.
- **Link to the dBASE KnowledgeBase** – Provides links to the dBASE KnowledgeBase, a compilation of useful information about using dBASE.

Step 4 If you chose to *Install dBASE PLUS*, follow the on-screen prompts.

The Borland Database Engine will also be installed during the dBASE PLUS installation. *If you have other applications running that use the Borland Database Engine, the dBASE Setup Program will ask you to close them before continuing.*

When prompted for a Serial Number, enter the number you received by e-mail or with the installation CD.

The following settings can either be left at their default or modified to suit your specific needs:

- Location for the dBASE PLUS files – defaults to “C:\Program Files\dBASE\PLUS”
- Location for the BDE files – defaults to “C:\Program Files\Common Files\Borland\BDE”
- Name of the program folder – defaults to “dBASE PLUS”

Step 5

If you accept the defaults and click Next on each screen of the Installation Wizard, dBASE PLUS will be installed for you automatically. There is no further setup or configuration that needs to be performed at this time. You can run the program immediately.

If you have any questions, please contact dataBased Intelligence Customer Service at: 888-322-7332 Monday through Friday during business hours (Eastern Time zone).

Step 6

If you chose to *Install Project Explorer Support Tools*, a second menu will appear that will allow you to install ScriptMaker and the Inno Setup QuickStart Pack.



To install the Inno Setup QuickStart Pack:

- Follow the on-screen prompts.
- Choose installation location – defaults to “C:\Program Files\Inno Setup 5”
- Choose Start Menu folder – defaults to “Inno Setup 5”
- Uncheck the box to download and install IS Tool.
- Make sure the box is checked to install Inno Setup Preprocessor.
- Uncheck the box to download and install encryption support.

