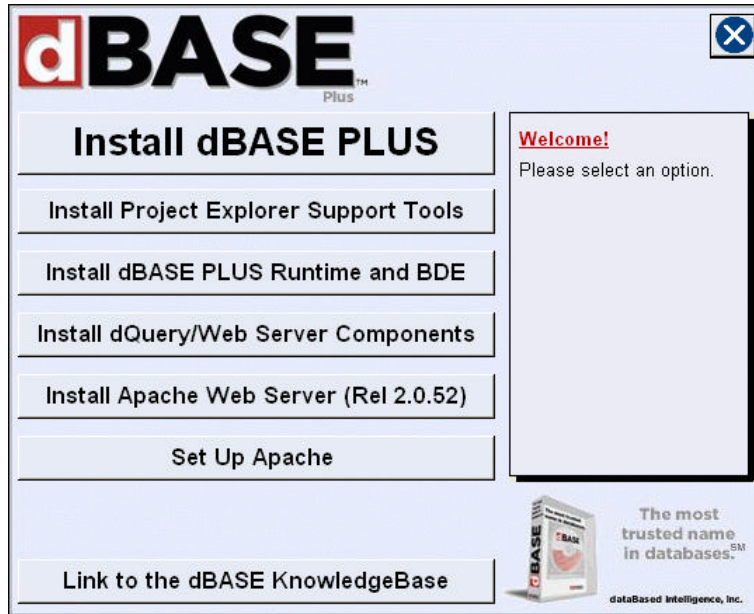


dBASE

INSTALLATION AND SET UP GUIDE

Step 1 To install dBASE PLUS, insert the dBASE CD into your CD drive. For most Windows installations, the dBASE Setup Program (shown below) will start automatically.



Step 2 If the dBASE Setup Program does not start automatically within 30 seconds, use the Windows Explorer to navigate to the CD drive where the dBASE CD is inserted or locate the folder to which you downloaded the software. Double-click on the *SETUP.EXE* file to start the Setup Program.

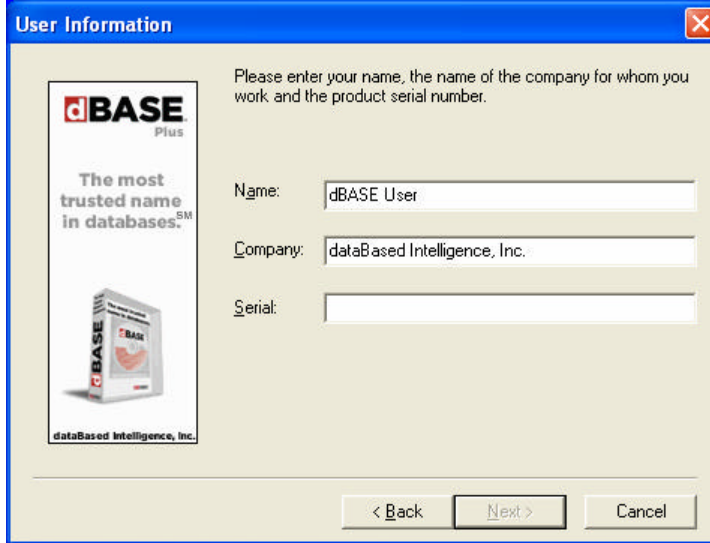
Step 3 Choose one of the following options:

- **Install dBASE PLUS** – Installs dBASE PLUS on your computer. Refer to *Step 4* and *Step 5* for further instructions.
- **Install Project Explorer Support Tools** – The Project Explorer has the ability to generate a script that can be used to create an installation program. Choose this option to add support for this feature, which includes ScriptMaker and the Inno Setup QuickStart Pack. See *Step 6* for installation instructions.
- **Install dBASE PLUS Runtime and BDE** – Use the runtime engine and BDE when distributing an application created with dBASE to other computers.
- **Install dQuery/Web Server Components** – Sets up a web server to support running dQuery/Web programs.
- **Install Apache Web Server** – Installs Apache 2.0.52 web server software. Apache can be used to set up a web site for running dQuery/Web applications.
- **Set Up Apache** – Launches a wizard to configure a locally installed Apache web server.
- **Link to the dBASE KnowledgeBase** – Provides links to the dBASE KnowledgeBase, a compilation of useful information about using dBASE.

Step 4 If you chose to *Install dBASE PLUS*, follow the on-screen prompts.

The Borland Database Engine will also be installed during the dBASE PLUS installation. *If you have other applications running that use the Borland Database Engine, the dBASE Setup Program will ask you to close them before continuing.*

When prompted for a Serial Number, enter the number sent to you in email or with the installation CD.

The image shows a Windows-style dialog box titled "User Information" with a blue header and a close button in the top right corner. The dialog has a light beige background. On the left side, there is a vertical banner for "dBASE Plus" with the text "The most trusted name in databases. SM" and an image of a software box. Below the banner, it says "dataBased Intelligence, Inc.". On the right side, there is a text prompt: "Please enter your name, the name of the company for whom you work, and the product serial number." Below this prompt are three input fields: "Name:" with the text "dBASE User", "Company:" with the text "dataBased Intelligence, Inc.", and "Serial:" which is empty. At the bottom of the dialog, there are three buttons: "< Back", "Next >", and "Cancel".

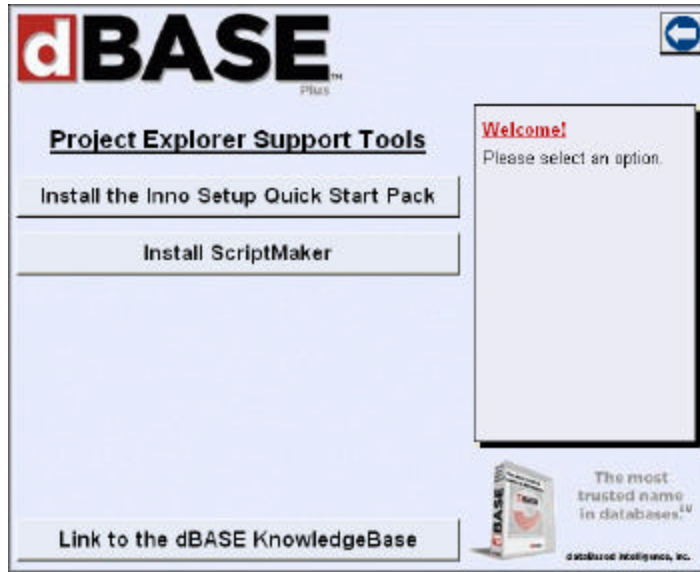
The following settings can either be left at their default or modified to suit your specific needs:

- Location for the dBASE PLUS files – defaults to “C:\Program Files\dBASE\PLUS”
- Location for the BDE files – defaults to “C:\Program Files\Common Files\Borland\BDE”
- Name of the program folder – defaults to “dBASE PLUS”

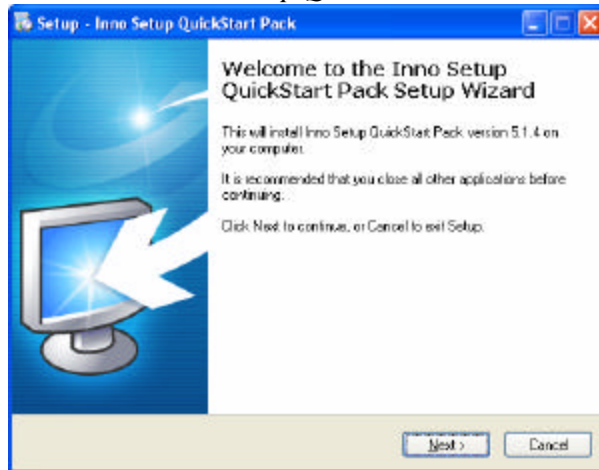
Step 5 If you accept the defaults and click Next on each screen of the Installation Wizard, dBASE PLUS will be installed for you automatically. There is no further setup or configuration that needs to be performed at this time. You can run the program immediately.

If you have any questions, please contact dataBased Intelligence Customer Service at: 888-322-7332 Monday through Friday during business hours (Eastern time zone).

Step 6 If you chose to *Install Project Explorer Support Tools*, a second menu will appear that will allow you to install ScriptMaker and the Inno Setup QuickStart Pack.



To install the Inno Setup QuickStart Pack:



- Follow the on-screen prompts.
- Choose installation location – defaults to “C:\Program Files\Inno Setup 5”
- Choose Start Menu folder – defaults to “Inno Setup 5”
- Uncheck the box to download and install IS Tool.
- Make sure the box is checked to install Inno Setup Preprocessor.
- Uncheck the box to download and install encryption support.